

# Report to Presbytery

September 2020 – Jacqueline Taylor, General Presbyter

- In this presentation I will address the following:
- My strategic direction
- Mandates for multi-level strategic planning – What We Do
- Rubric for Presbytery Initiatives – How we do it



# Presbytery of Baltimore Vision



***"Called to community by God, disciplined by Jesus Christ, enlivened by the Holy Spirit, The Presbytery of Baltimore encourages, challenges and equips our congregations to thrive spiritually and be apostles for reconciliation."***

# Rationale for Intentional Re-Focus

- It's time
- Shift in committee participation/ low meeting attendance/difficulty nominating leaders
- Visioning occurring across the presbytery
- Rise of community organizing and local church action in church growth and community engagement
- COVID-19 and beyond



# Presbytery of Baltimore Vision Planning

## What we do



**Presbytery of Baltimore**  
**Renewing the Vision 2011-2013**



# Adaptive Planning

THE CASCADE OF STRATEGIC CHOICES:



© 2012 Monitor Institute, all rights reserved

# Adaptive Planning

Presbytery leaders decide if priorities in a traditional plan are still relevant or require adjustment before proceeding to action.

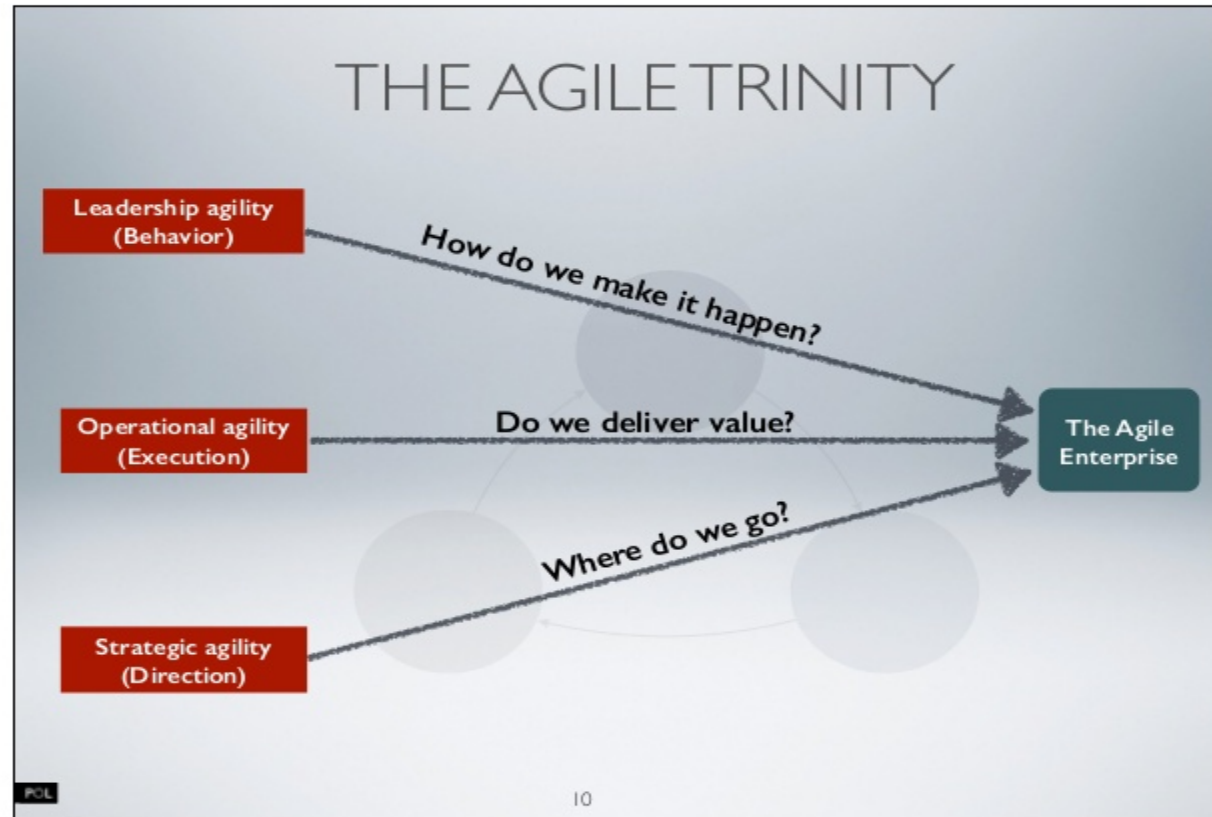
Make changes or adjustments and suspend initiatives if they are not relevant in the current environment. This includes looking at financial and or budgetary implications or changes.

These short-term plans should be evaluated every 90 days.

**TASK: Focus staff time and energy in Commission and Ministry Group work**



# Agile Planning



# Agile Planning



1. Expect organized groups outside of traditional elected Presbytery leadership to lead.
2. Groups define a clear purpose, the rules, and a deadline for decision making.
3. Create a safe space for creativity and contextual initiatives without judging from the past.
4. Partner in the funding

**Task:** Create funding stream or grants for emerging initiative and emerging needs.



# Strategic Planning: How We Do It

- Adopt three pronged model of planning
- Each Commission/Committees reviews responsibilities and sets priorities
- Develop Calendar overview for the year
- Adopt Rubric for Presbytery Initiatives
- Be willing to try something new!
- Evaluate in 6-9 months



# Rubric for Presbytery of Baltimore Initiatives

## Articulating The Vision



## Evaluating the Vision

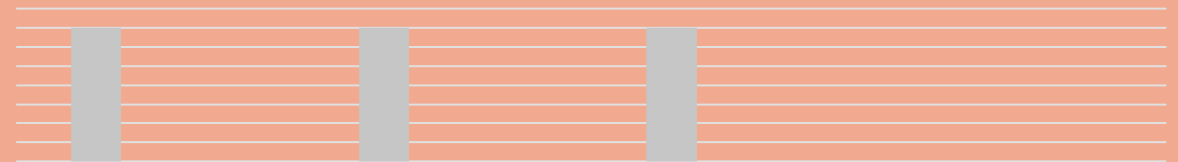
Clarity – vision, purpose, outcomes

Capacity – people and resources

Commitment – people taking ownership

Cost – analysis, budget, additional funds

## Realizing the Vision



**Enlivening/Thriving:** Church Growth, Purpose, Worship, NWC  
**Disciplined/Leadership:** Faith in Action, Development, Coaching  
**Community/ Reconciliation:** Diversity, Justice, Engagement

